

A Community-Engaged Collective Impact Approach to Grand Challenges: What We've Learned

Katie Kleinhesselink & Cara DiEnno, PhD

Center for Community Engagement to advance Scholarship and Learning,
University of Denver

ESC 2021

The Plan

01

Introduce DU
Grand Challenges
and our collective
impact process

02

Explore lessons
learned and
implications for
practice

03

Share
resources/tools

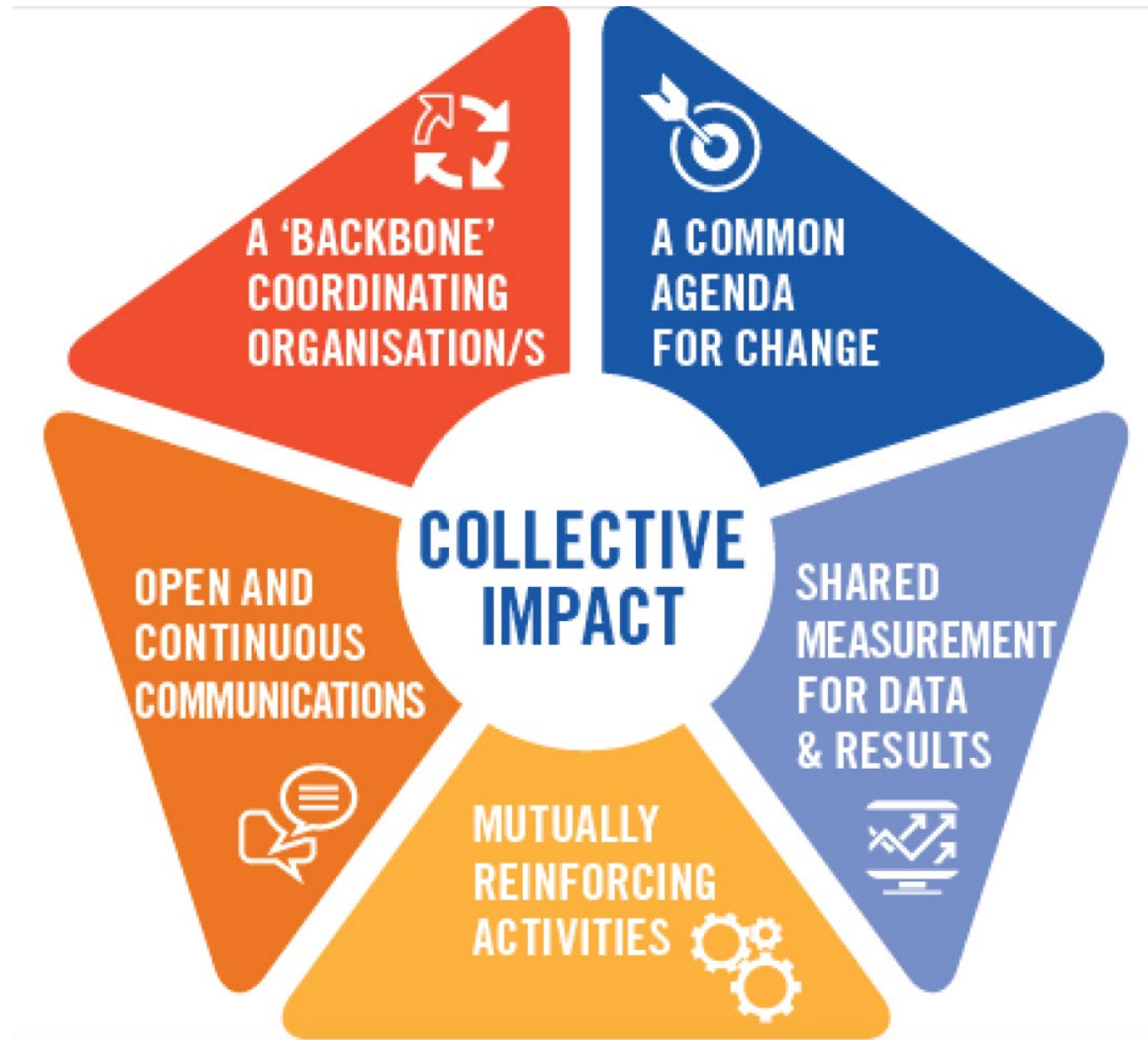


ASPIRE
ACT
ACHIEVE

THRIVING COMMUNITIES

Our potential to thrive together is tied in with our ability to address interconnected issues that affect **living**, **working**, and **participating** in our communities.

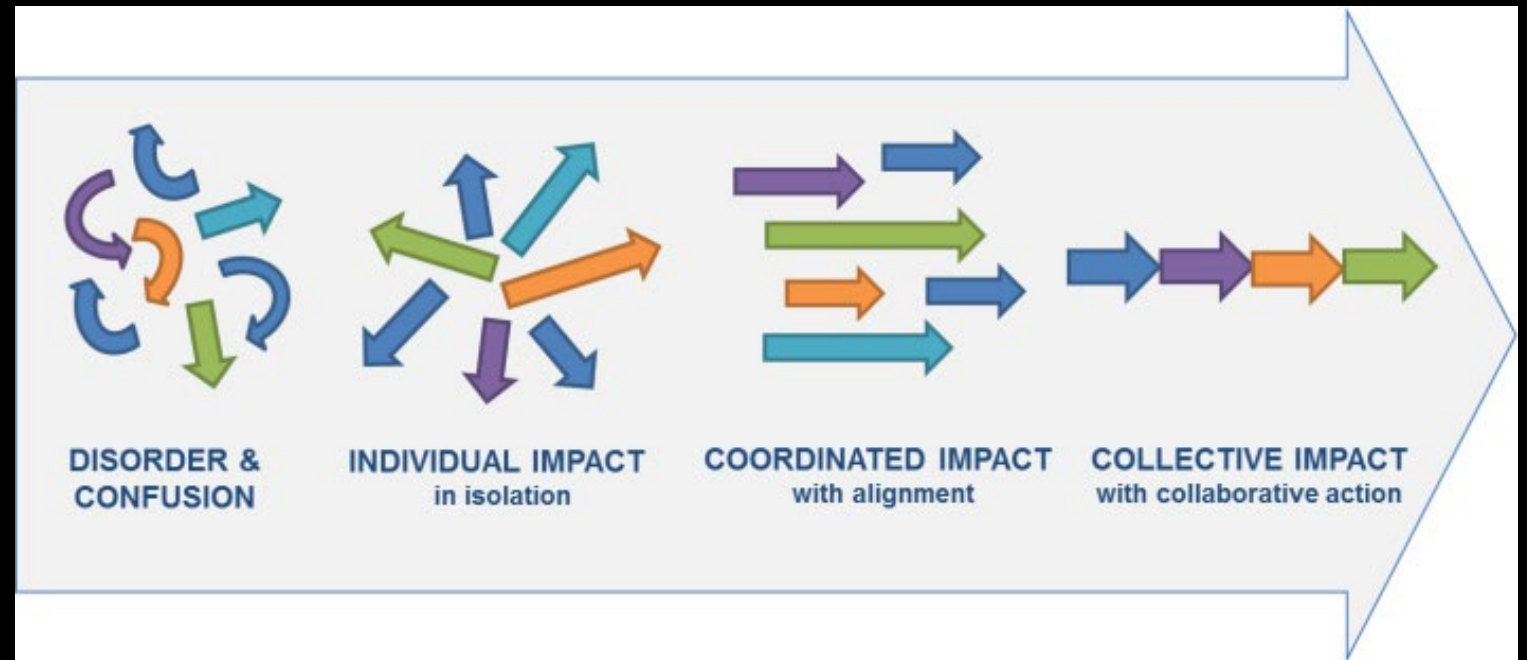
Together, we build thriving communities by solving complex problems through collaborations characterized by equity, inclusion, mutual benefit, and full participation.



Credit: Collective Impact Forum

Adapting Collective Impact to Higher Education

- Parallels between collective impact framework and higher ed structures
- Collective impact provided the frame and structure for DU Grand Challenges





Improving Daily Living Cohorts

- Crime & Safety
- Migration
- Sustainability in an Urban Environment
- Housing and Food Insecurity

The Vision

Cohorts comprised of community-engaged faculty and their partners

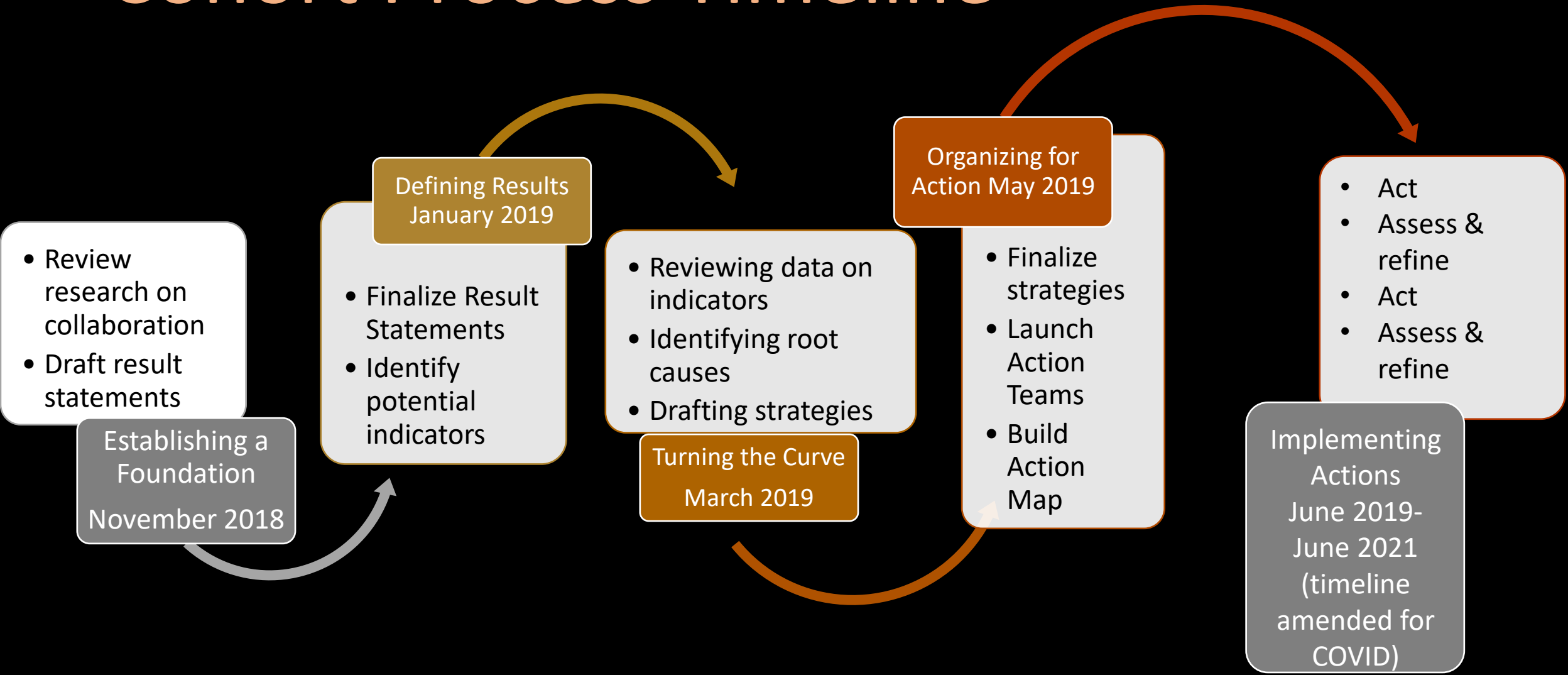
Align existing community-engaged work in service to a collective vision

Foster new collaborations across disciplines, sectors, etc.

External facilitator to guide the planning process

Funding for each cohort to seed sustainable networked collaborations

Cohort Process Timeline





The Process

What really happened...
and what we learned.

The Vision

Cohorts comprised of community-engaged faculty and their partners

Align existing community-engaged work in service to a collective vision

Foster new collaborations across disciplines, sectors, etc.

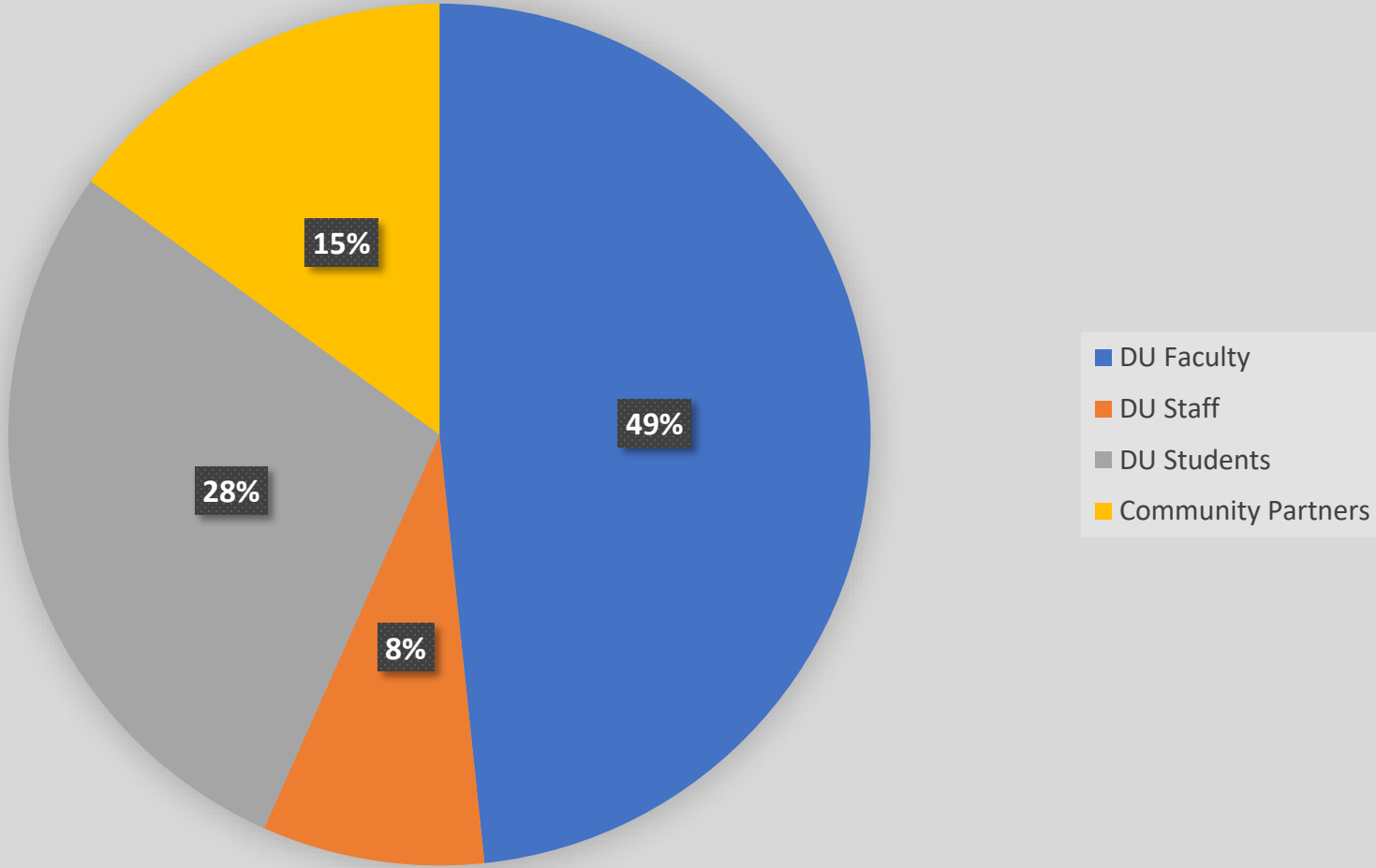
External facilitator to guide the planning process

Funding for each cohort to seed sustainable networked collaborations

Cohort Make-up

- 2 Faculty Co-leads
- Members
 - Faculty
 - Staff
 - Students
 - Partners
- One Process Facilitator
- Backbone Support from DUGC Program Manager

Cohort Members by Type





Lessons 1 & 2

Focus the application process toward those you need in the room.

Create a process that ensures equitable participation is possible.

The Vision

Cohorts comprised of community-engaged faculty and their partners

Align existing community-engaged work in service to a collective vision

Foster new collaborations across disciplines, sectors, etc.

External facilitator to guide the planning process

Funding for each cohort to seed sustainable networked collaborations

Trying Hard Is Not Good Enough

*How to Produce Measurable Improvements
for Customers and Communities*

Mark Friedman

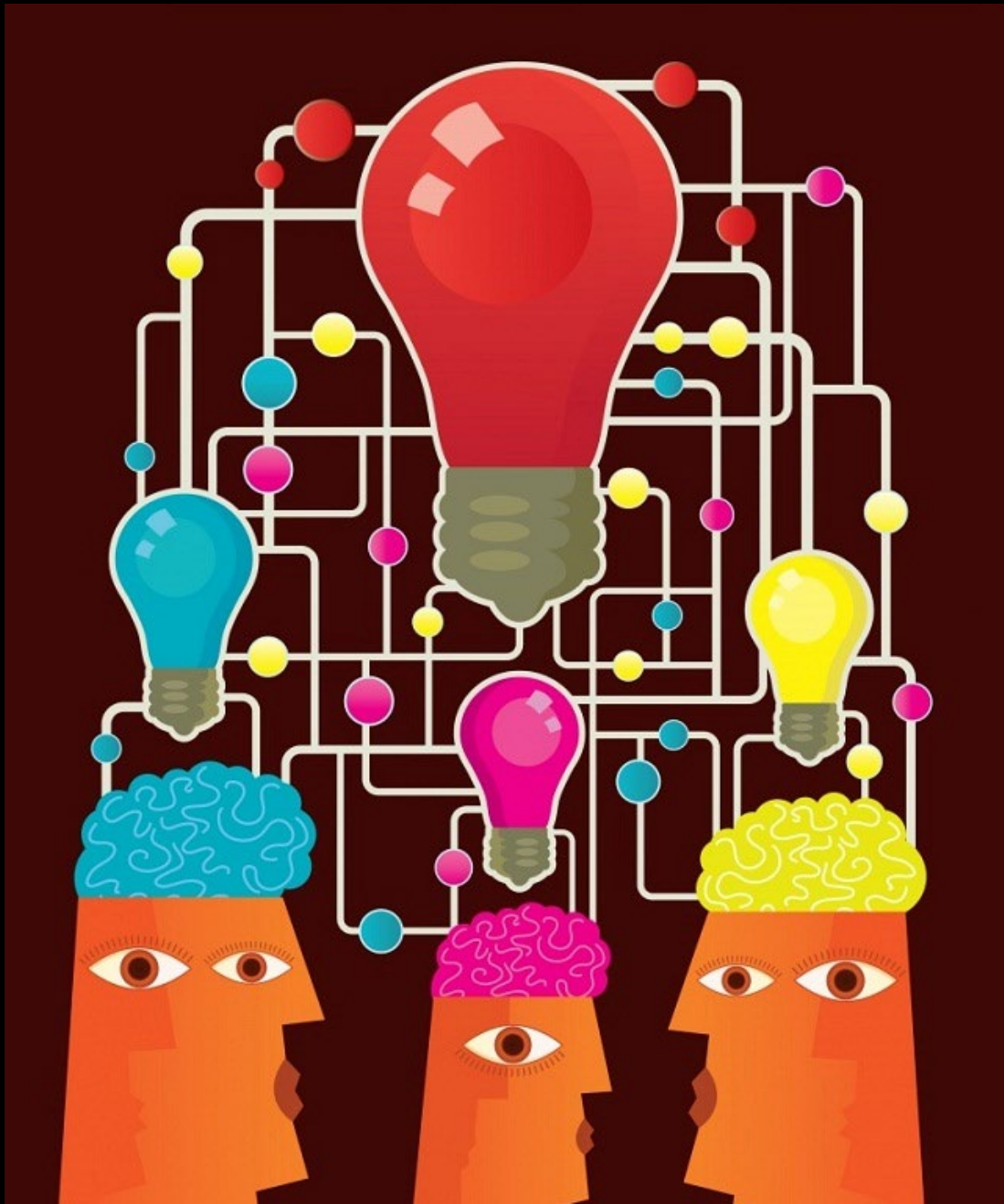
Results-Based Accountability

- Disciplined process of moving from desired result to concrete action steps
- Starts with ends and works backwards to means.
- Designed to be common-sensible, not jargony
- Emphasizes use of data to inform decisions



Lesson 3

Know your audience.



The Structure

What really happened...
and what we learned.

The Structure

The Vision

Cohorts comprised of community-engaged faculty and their partners


Align existing community-engaged work in service to a collective vision

Foster new collaborations across disciplines, sectors, etc.

External facilitator to guide the planning process

Funding for each cohort to seed sustainable networked collaborations

The Reality

- CCESL Staff served as facilitators and, in some cases, cohort members
 - CCESL held the purse strings, engendering a power dynamic and limiting thinking
 - CCESL provided the backbone support
- 



Lesson 4

You can't be all things to all people.



The Results

What really happened...
and what we learned.

The Results

The Vision

Cohorts comprised of community-engaged faculty and their partners

Align existing community-engaged work in service to a collective vision

Foster new collaborations across disciplines, sectors, etc.

External facilitator to guide the planning process

Funding for each cohort to seed sustainable networked collaborations

Success!



VALVERDE  **PROYECTO**
MOVEMENT PROJECT MOVIMIENTO VALVERDE

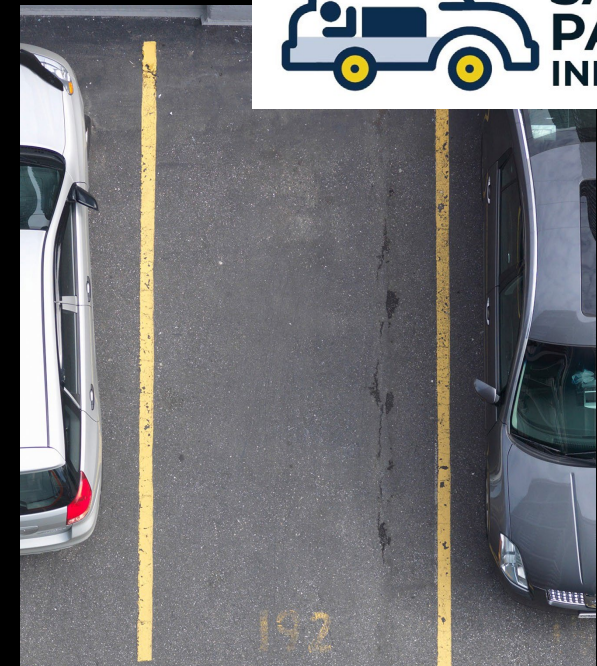


A/LIVE INSIDE:

A VIRTUAL SHOWCASE OF
ARTISTS AND THEIR STORIES
FROM COLORADO'S PRISONS



COLORADO
**SAFE
PARKING
INITIATIVE**



Was this the community-engaged collective impact approach to grand challenges that we envisioned?

No.

And yet...perhaps this *is* what the higher education version of community-engaged collective impact looks like. At least this time.

The Big Lesson

Emergent Strategy!

- Change is constant (be like water).
- Trust the people.
- Never a failure, always a lesson.

-brown (2017)



Intrigued? Confused?

Wanna talk more?

Cara.DiEnno@du.edu

Katie.Kleinhesselink@du.edu

